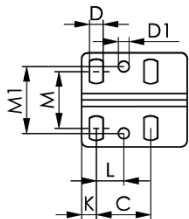


Tipo	A	B	C	D	D1	E	F	F1 [kN]	F2 [kN]	H	H1	H2	HW min.	HW max.	I	K	L	L1	M	M1	N	P	α	Parafusos de aperto
2	5	63	26,0	5,6	5,6	35	16,0	1,0	1,2	24	45,0	68	-4,0	4	13	6,0	12,7	161	24,5	28,5	42	38	90°	M 6x35
3	6	72	26,0	6,5	5,1	44	15,0	1,8	2,5	32	48,5	86	-3,5	9	15	7,0	13,0	205	27,0	32,0	45	50	90°	M 8x45
4	8	111	41,0	8,5	8,5	66	26,0	2,0	3,0	45	75,0	114	-6,0	22	20	8,0	20,5	280	36,0	43,0	58	57	90°	M 8x65
5	10	121	41,5	8,0	-	78	17,5	3,0	5,0	46	73,0	128	-13,0	12	25	12,5	-	320	41,5	-	58	77	90°	M12x80

2-3-4



5

