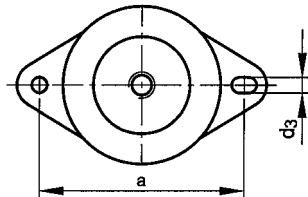
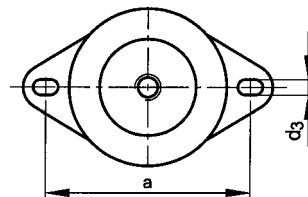


Special features of mountings type RA:

- suitable for the effective isolation of vibration and noise on different machines with rotating movements, like compressors, combusting engines, generators, converters, pumps, industrial and marine gensets, fans, for use with presses, punches and other workshop machines.
- fitted as standard with an integral fail-safe design device with resilient stop.



TYPE RA 100, RA 200, RA 500, RA 800



TYPE RA 350